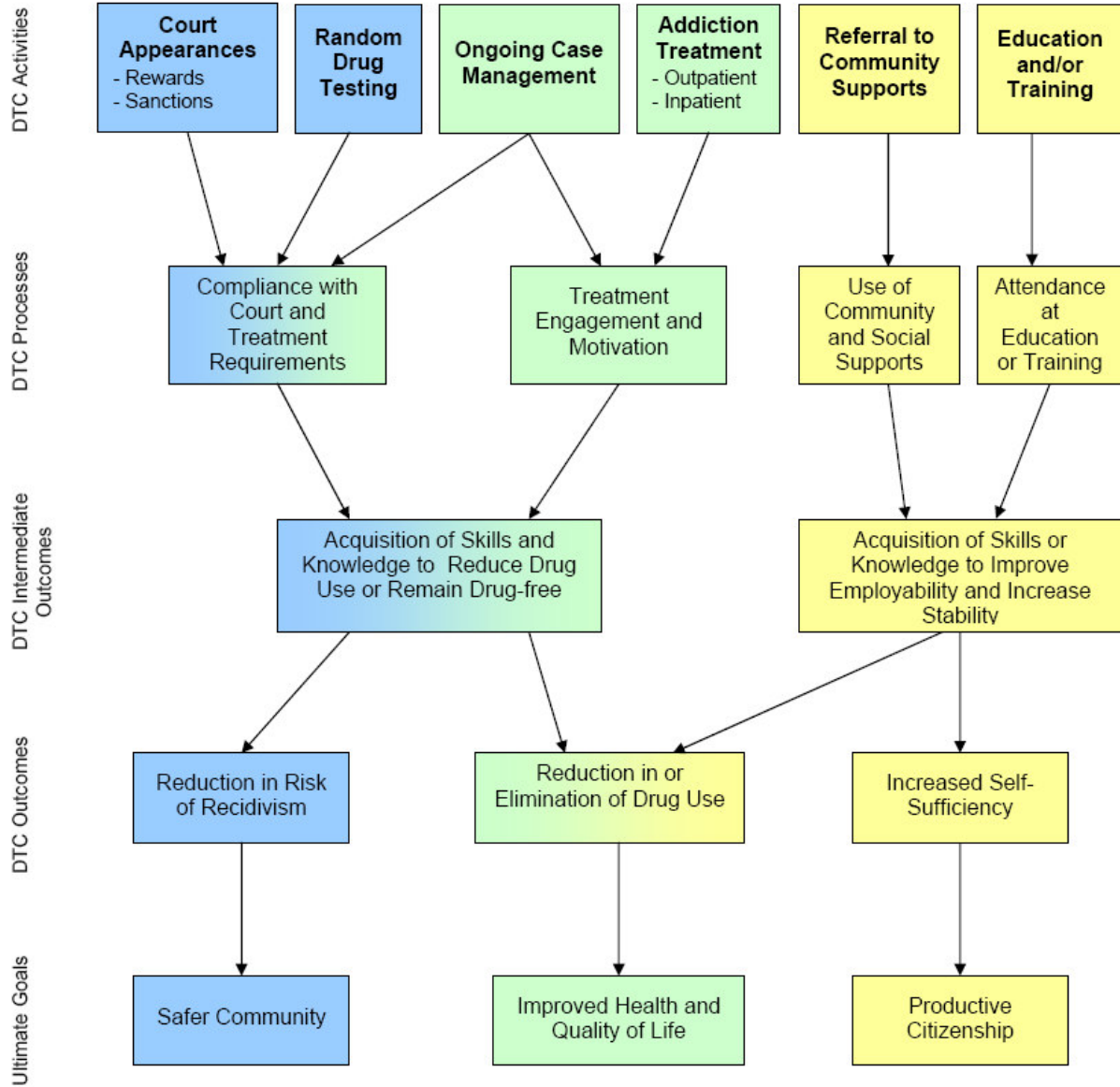


## **Program Evaluation**

The evaluation of the Edmonton Drug Treatment and Community Restoration Court (EDTCRC) is intended to serve two functions. First, it fulfills reporting requirements of the Department of justice federal funding program. Edmonton, like the three other new DTC programs in Regina, Winnipeg and Ottawa and the two existing DTC courts in Toronto and Vancouver, is also required to collect and submit various data that will subsequently be aggregated within the evaluation of the funding program itself. Second, it will be used to document the program's activities, development, and outcomes.

The Program Evaluation is based on a Program Logic Model, which was developed in conjunction with the EDTCRC Team to represent how program activities are expected to produce short term and longer-term outcomes.

## EDTCRC Program Logic Model - DRAFT



## **Evaluation Components**

The evaluation will consist of three components:

1) Process Evaluation: The purposes of a process evaluation are to document the implementation of a program and identify strengths and challenges in its delivery. This entails an examination of (a) who participated in the program, and how effective the admission process was, (b) what program activities were delivered, and (c) immediate outcomes of the program (DTC Processes). This piece of the evaluation will involve analysis of administrative data and qualitative interviews with current participants and EDTCRC team members.

2) Outcome Evaluation: The purposes of the outcome evaluation are to address the question of whether the program was effective in bringing about changes in recidivism, drug use, and self-sufficiency among participants. The evaluation is pursuing the feasibility of employing two comparison groups to help address the effectiveness questions. First, a group of court-referred treatment clients who are not involved in the EDTCRC will be sought. Second, we aim to recruit a group of court-involved arrestees who are not participants in the EDTCRC, to help understand how EDTCRC differ from those who do not take part in the EDTCRC. See Table 1 below for a summary of the key measures that would be obtained from each group.

3) Social Return on Investment: Social Return on Investment (SROI) refers to an approach that compares the resources invested in an activity (in this case the Edmonton Drug Treatment and Community Restoration Court) to the benefits generated by it.

**Table 1: Summary of Key Measures for Evaluation Participants**

	Data Collection Point		
	Baseline	In-Program	Program Exit
EDTCRC Participants	Demographics Housing, Income, Employment, Education Criminal History Current Criminal Charges Psychiatric symptoms Criminal risk Addiction Severity Drug Abuse Severity Alcohol Dependence Past 30-Day Drug Use Treatment Motivation	Treatment Intensity Days Abstinent Treatment Progress Urinalyses Bail Breaches, Arrests, Charges, Convictions Drug Taking Confidence Abstinence Confidence Rewards/Sanctions, Court Appearances Global Functioning Housing, Income Employment, Education	
Court-Referred Treatment Clients	Demographics Housing, Income, Employment, Education Criminal History Addiction Severity Drug Abuse Severity Alcohol Dependence Past 30-Day Drug Use Treatment Motivation	Treatment Intensity	Addiction Severity Housing, Income, Employment, Education
Non-EDTCRC Arrestees	Basic Demographics Criminal History (from CPIC, JOIN)		Charges, Convictions (since original arrest)